

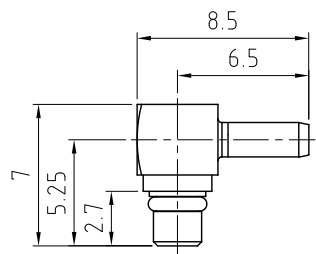
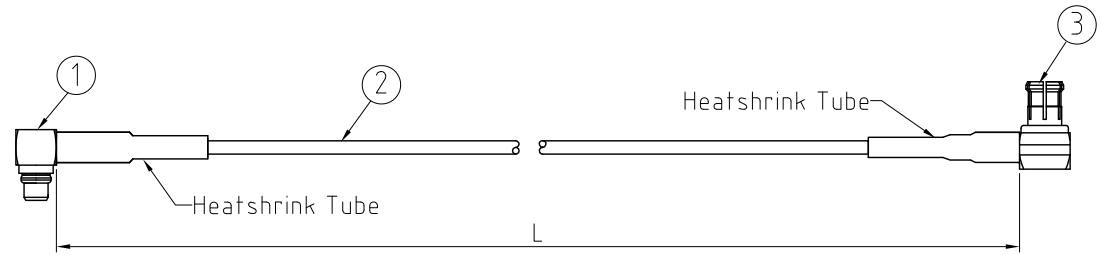
CAB568RF: MMCX RIGHT ANGLE PLUG + MCX RIGHT ANGLE PLUG + Ø1.32MM DUAL SHIELD CABLE, 6GHz

SPECIFICATIONS

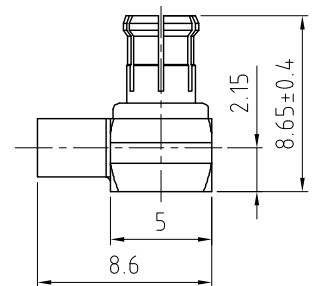
1. MMCX RIGHT ANGLE PLUG , P/N: RFCT-MMCX009-M32
2. Ø1.32MM DUAL SHIELD COAXIAL CABLE, COLOR: GRAY
3. MCX RIGHT ANGLE PLUG , P/N: RFCT-MCX010-M32

NOTES:

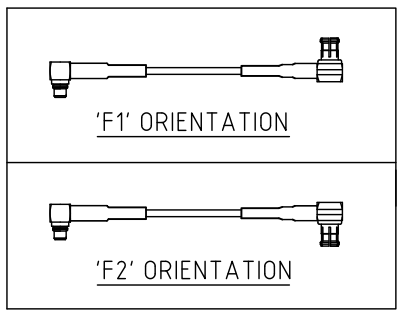
1. THE ORIENTATION OF CONNECTORS ON DRAWING IS FOR REFERENCE ONLY, IF THE ORDER IS LEFT BLANK THE CONNECTOR WILL NOT HAVE FIXED ORIENTATION.
2. FIXED ORIENTATION IS SUGGESTED FOR CABLE LENGTH 50MM TO 100MM. PLEASE SPECIFY THE FIXED ORIENTATIONS FROM THE ORDER CODE (F1, F2, ETC)
3. CONTACT GRAD CONN IF THE ORIENTATION YOU REQUIRE IS NOT SHOWN.
4. WORKING FREQUENCY RANGE: DC-6GHz
5. OPERATING TEMPERATURE: -40°C TO +125°C
6. IMPEDANCE: 50 OHM



MMCX PLUG DETAIL DRAWING



MCX PLUG DETAIL DRAWING



HOW TO ORDER

CAB568RF - XXXX - XX - 1

"L" LENGTH IN MM
 eg: 100MM = 0100
 (MIN. 0050-MAX.2000)
 STANDARD = 0100, 0150, 0200)
 Tolerance: 50mm : ±2mm.
 51-200mm: ±5mm.
 201-500mm: ±7mm.
 501-999mm: ±10mm.
 ≥1000mm: ± (Lx0.02)mm.

CABLE SIZE:
 1 = Ø1.32MM DUAL SHIELD CABLE, COLOR: GRAY

ORIENTATION OPTIONS:

BLANK = DOES NOT HAVE A FIXED ORIENTATION
 F1 = OPPOSITE ORIENTATION (L=50-200MM)
 F2 = SAME ORIENTATION (L=20-200MM)
 (SEE NOTES 1, 2, 3 AND DIAGRAMS FOR MORE INFORMATION)

REV. DATE & DRN
 TO: 27/04/23 - NYW RELEASE
 11. 17/05/23 - NYW
 AMEND PMCA P/N
 12. 15/06/24 - CC
 Add plug detail view
 Add MCX plug detail view

Scale: NTS	THIRD ANGLE	Unstated Tolerances: .X ±0.20 .XX ±0.20 .XXX ±0.20 ANGLES N/A	Material SEE NOTE
Drawn: CC			
App'd: XXX	Title CABLE ASSEMBLY	NOT TO SCALE	
Date: 13 JUN. '24	Revision: 1.2	Unit: mm	



THIS DRAWING IS CONFIDENTIAL AND MUST NOT BE COPIED OR DISCLOSED WITHOUT WRITTEN CONSENT

Drawing Number: CAB568RF	
Sheet 1	of 1
Drawing ©	E and O E