

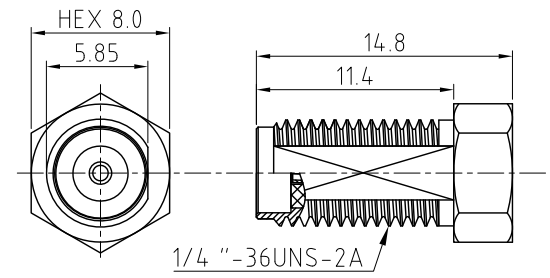
CAB594RF: MMCX RIGHT ANGLE PLUG + SMA STRAIGHT BULKHEAD JACK+ RG178 CABLE, 3GHz

SPECIFICATIONS:

1. MMCX RIGHT ANGLE PLUG, GOLD. P/N: RFCT-MMCX017-M78.
2. RG178 COAXIAL CABLE, COLOR: BROWN
3. SMA STRAIGHT BULKHEAD JACK, GOLD. P/N: RFCT-SMA133-F78.

NOTES:

1. THE ORIENTATION OF CONNECTORS ON DRAWING IS FOR REFERENCE ONLY, IF THE ORDER IS LEFT BLANK THE CONNECTOR WILL NOT HAVE FIXED ORIENTATION.
2. FIXED ORIENTATION IS SUGGESTED FOR CABLE LENGTH 50MM TO 100MM. PLEASE SPECIFY THE FIXED ORIENTATIONS FROM THE ORDER CODE (F1, F2, ETC)
3. CONTACT GRAD CONN IF THE ORIENTATION YOU REQUIRE IS NOT SHOWN.
4. WORKING FREQUENCY RANGE: DC - 3GHz.
5. IMPEDANCE: 50 OHM.
6. OPERATING TEMPERATURE: -40°C TO +125°C



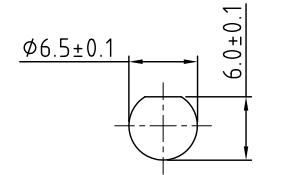
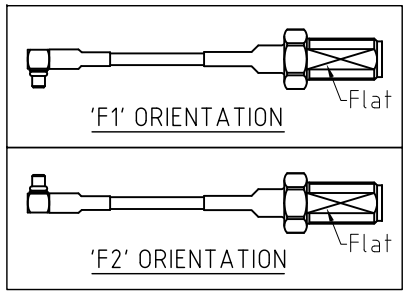
SMA JACK DETAIL DIMENSION

HOW TO ORDER
CAB594RF - X X X X - X X - X - 1

"L" LENGTH IN MM
eg: 100MM = 0100
(MIN. 0050-MAX.2000
STANDARD = 0100, 0150, 0200)
Tolerance :50mm : ±2mm.
51-200mm: ±5mm.
201-500mm: ±7mm.
>501mm: ±10mm.

CABLE SIZE:
1 = RG178 CABLE, COLOR: BROWN
WASHER AND NUT OPTIONS:
BLANK = SEPERATELY PACKED (STANDARD)
A = ASSEMBLED WITH CONNECTOR

ORIENTATION OPTIONS:
BLANK = DOES NOT HAVE A FIXED ORIENTATION
F1 = MMCX CONNECTION DOWN (L=50-200MM)
F2 = MMCX CONNECTION UP (L=50-200MM)
(SEE NOTES 1, 2, 3 AND DIAGRAMS FOR MORE INFORMATION)



RECOMMENDED SMA MOUNTING HOLE

REV. DATE & DRN
TO 04/09/23 - NYW RELEASE
11/26/07/24 - CC
ADD FREQUENCY 3GHz TO TITLE.

Scale: NTS	THIRD ANGLE	Unstated .X .XX .XXX ANGLES	Tolerances: ±0.2 ±0.2 ±0.2 N/A	Material SEE NOTE
Drawn: CC				NOT TO SCALE
App'd: XXX	Title CABLE ASSEMBLY			
Date: 26 JUL '24	Revision: 1.1	Unit: mm		



www.gradconn.com

THIS DRAWING IS CONFIDENTIAL AND MUST NOT BE COPIED OR DISCLOSED WITHOUT WRITTEN CONSENT

Drawing Number: CAB594RF	
Sheet 1	of 1
Drawing ©	E and O E