

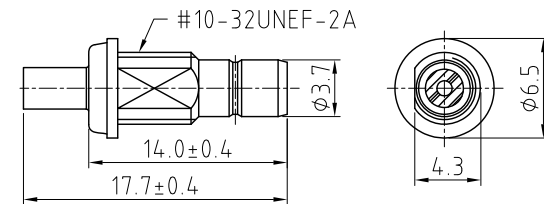
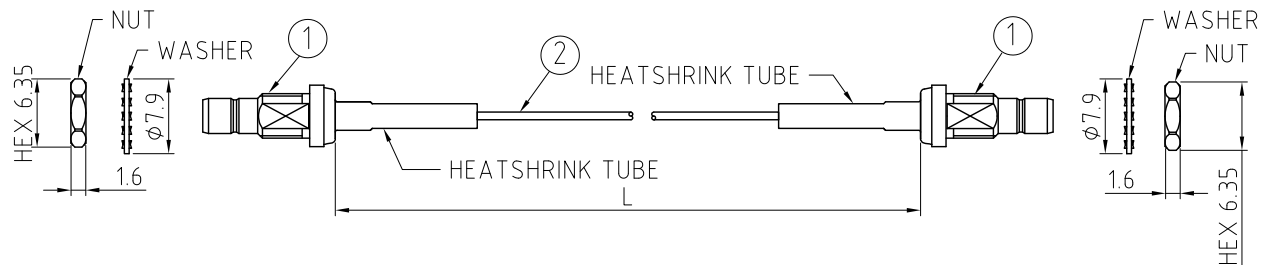
CAB598RF: SMB STRAIGHT BULKHEAD JACK + SMB STRAIGHT BULKHEAD JACK + $\phi 0.81$ MM CABLE, 3GHz

SPECIFICATIONS:

1. SMB BULKHEAD JACK, GOLD, P/N: RFCT-SMB002-F08.
2. $\phi 0.81$ MM COAXIAL CABLE, COLOR: GRAY

NOTES:

1. THE ORIENTATION OF CONNECTORS ON DRAWING IS FOR REFERENCE ONLY.
2. FIXED ORIENTATION IS SUGGESTED FOR CABLE LENGTH 50MM TO 100MM.
3. WORKING FREQUENCY RANGE: DC-3GHz
4. OPERATING TEMPERATURE: -40°C TO $+125^{\circ}\text{C}$.
5. IMPEDANCE: 50 OHM.



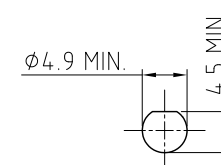
SMB JACK DETAIL DIMENSION

HOW TO ORDER
CAB598RF - X X X X - X - 1

"L" LENGTH IN MM
eg: 100MM = 0100
(MIN.0050, STANDARD= 0100, 0150, 0200)
Tolerance: 50mm : ± 2 mm.
51-200mm: ± 5 mm.
200-500mm: ± 7 mm.
501-999mm: ± 10 mm.
 ≥ 1000 mm: $\pm (L \times 0.02)$ mm.

CABLE SIZE:
1 = $\phi 0.81$ MM CABLE, COLOR: GRAY

WASHER AND NUT OPTIONS:
BLANK = SEPARATELY PACKED (STANDARD)
A = ALL ASSEMBLED WITH CONNECTOR



RECOMMENDED SMB MOUNTING HOLE

REV. DATE & DRN
10 21/09/23 - INTX RELEASE
11 09/05/24 - CC
Add frequency 3GHz to title

Scale: NTS	THIRD ANGLE	Unstated Tolerances: .X ± 0.2 .XX ± 0.2 .XXX ± 0.2 ANGLES N/A	Material SEE NOTE
Drawn: CC			
App'd: XXX	Title CABLE ASSEMBLY	NOT TO SCALE	
Date: 8 MAY '24	Revision: 1.1	Unit: mm	

www.gradconn.com

THIS DRAWING IS CONFIDENTIAL AND MUST NOT BE COPIED OR DISCLOSED WITHOUT WRITTEN CONSENT

Drawing Number: CAB598RF	
Sheet 1	of 1
Drawing ©	E and O E