

CAB605RF: SMA STRAIGHT PLUG + S/S TNC FEMALE STRAIGHT BULKHEAD JACK W/O-RING RATED TO IP67/68 + 1.37MM CABLE, 3GHz

SPECIFICATIONS :

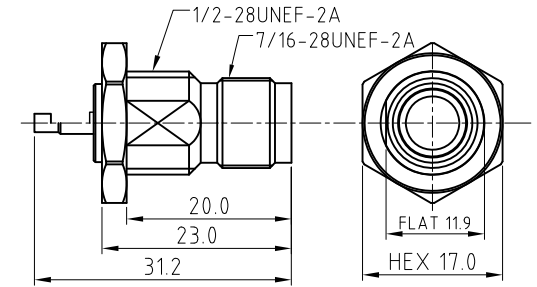
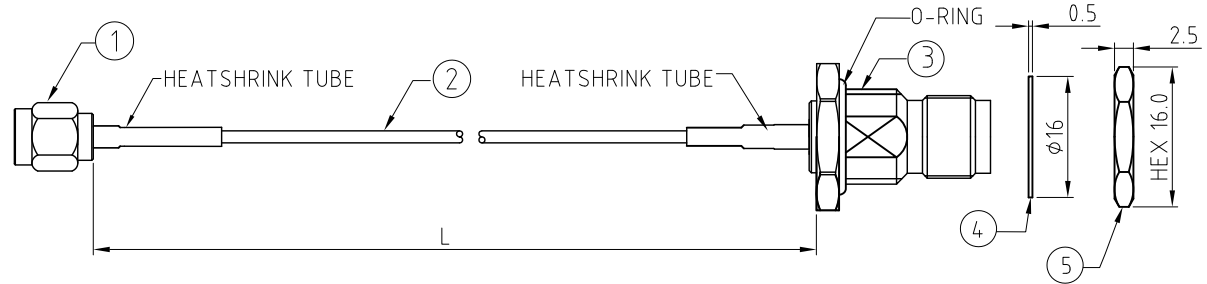
1. SMA STRAIGHT PLUG, GOLD PLATED, P/N: RFCT-SMA026-M37.
2. Ø1.37MM COAXIAL CABLE, COLOR: BLACK.
3. TNC STRAIGHT BULKHEAD JACK W/O-RING, W/SUS303 STAINLESS STEEL BODY, RATED TO IP67/68, P/N: RFCT-TNC018-F78 (WITH SILICONE O-RING) OR RFCT-TNC018-F78-1 (WITH EPDM O-RING).
4. WASHER: SUS304, NICKEL PLATED
5. NUT: SUS303, PASSIVATED.

ENVIRONMENTAL:

- A. BULKHEAD MOUNTED CONNECTOR (RFCT-TNC018-F78) RATED TO THE FOLLOWING SPECIFICATION:
- i. IP6X - DUST TIGHT - NO PARTICLE INGRESS.
  - ii. IPX7 WATERPROOF FOR 30 MINUTES UP TO 1 METER UNDERWATER.
  - iii. IPX8 WATERPROOF FOR 48 HOURS AT 1 METER UNDERWATER.

NOTES:

1. WORKING FREQUENCY RANGE: DC-3GHz.
2. OPERATING TEMPERATURE: -40°C TO +125°C
3. IMPEDANCE: 50 OHM
4. IF THE CONNECTOR IS USED IN A CORROSIVE ENVIRONMENT, WE RECOMMEND THE CONNECTOR FACE IS PROTECTED WITH A STAINLESS STEEL DUST CAP.
5. PLEASE USE THE RECOMMENDED TORQUE FORCES FOR STAINLESS STEEL CONNECTORS. THIS IS PUBLISHED ON GRADCONN.COM RESOURCES PAGE.



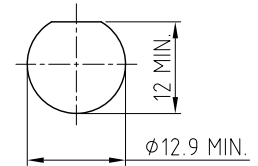
TNC DETAIL DRAWING

HOW TO ORDER  
CAB605RF - X X X X - X - 1 - X

"L" LENGTH IN MM:  
eg: 100MM = 0100  
(MIN. 0050-MAX.2000)  
STANDARD = 0100, 0150, 0200  
Tolerance: 50mm: ±2mm  
51-200mm: ±5mm.  
201-500mm: ±7mm.  
501-999mm: ±10mm.  
>1000mm: ± (Lx0.02)mm.

O-RING MATERIAL OPTIONS:  
S = SILICONE, BLACK  
E = EPDM, BLACK (STANDARD)

WASHER AND NUT OPTIONS:  
BLANK = SEPARATELY PACKED (STANDARD)  
A = ALL ASSEMBLED WITH CONNECTOR



RECOMMENDED TNC MOUNTING HOLE  
(TOLERANCE: ±0.1)

REV. DATE & DRN  
1.0 30/10/23 - INTX RELEASE  
11/13/05/24 - CC  
Add frequency 3GHz to title

Scale: NTS	THIRD ANGLE	Unstated Tolerances: .X ±0.2 .XX ±0.2 .XXX ±0.2 ANGLES N/A
Drawn: CC		
App'd: XXX	Title CABLE ASSEMBLY	
Date: 13 MAY. '24	Revision: 1.1	Unit: mm



IP Rated RF Products



www.gradconn.com

Drawing Number:

CAB605RF

Sheet 1 of 1

Drawing © E and O E

THIS DRAWING IS CONFIDENTIAL AND MUST NOT BE COPIED OR DISCLOSED WITHOUT WRITTEN CONSENT