

CAB557RF: I-PEX MHF 4L PLUG + RP SMA STRAIGHT BULKHEAD JACK +  $\phi$ 1.13MM CABLE - 6GHz

SPECIFICATIONS:

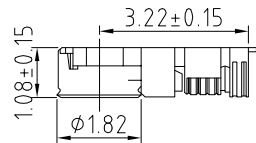
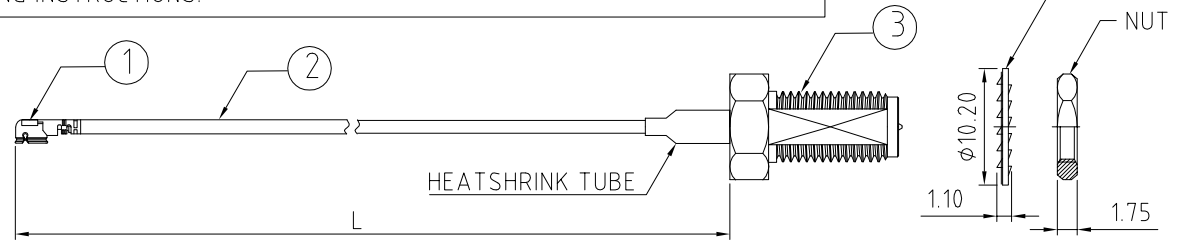
1. I-PEX MHF 4L PLUG, P/N: 20565-001R-13.
2.  $\phi$ 1.13MM COAXIAL CABLE, COLOR: GRAY
3. RP SMA STRAIGHT BULKHEAD JACK, GOLD PLATED, P/N: RFCT-SMA118-F13.

NOTES:

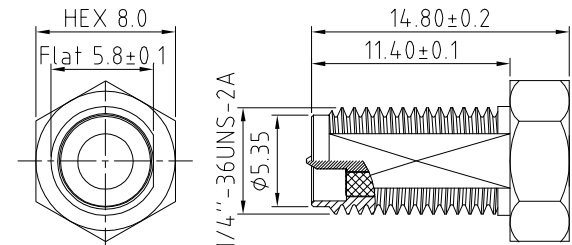
1. THE ORIENTATION OF CONNECTORS ON DRAWING IS FOR REFERENCE ONLY, IF THE ORDER IS LEFT BLANK THE CONNECTOR WILL NOT HAVE FIXED ORIENTATION.
2. FIXED ORIENTATION IS SUGGESTED FOR CABLE LENGTH 50MM TO 100MM. PLEASE SPECIFY THE FIXED ORIENTATIONS FROM THE ORDER CODE (F1, F2, ETC)
3. CONTACT GRAD CONN IF THE ORIENTATION YOU REQUIRE IS NOT SHOWN.
4. WORKING FREQUENCY RANGE: DC-6GHz.
5. OPERATING TEMPERATURE: -40°C TO +85°C
6. IMPEDANCE: 50 OHM

USAGE PRECAUTIONS: CABLES USING 'MICRO' COAX ARE DELICATE:

- (i) HANDLE WITH CARE.
- (ii) DO NOT TWIST; APPLY EXCESSIVE FORCES OR SHARP BENDS TO THE CABLE. DO NOT FORCEFULLY DEFORM WIRES.
- (iii) CONSULT CONNECTOR MANUFACTURER'S DATASHEETS FOR DETAILED NOTES ON HANDLING INSTRUCTIONS.



IPEX 4L PLUG DIMENSION



SMA JACK DETAIL DIMENSION

HOW TO ORDER

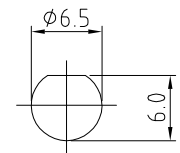
CAB557RF - X X X X - X X - X - 1

"L" LENGTH IN MM  
eg: 100MM = 0100  
(MIN. 0050, MAX. = 0400)  
STANDARD = 0100, 0150, 0200)  
Tolerance: 50mm :  $\pm$ 2mm.  
51-200mm:  $\pm$ 5mm.  
201-400mm:  $\pm$ 7mm.

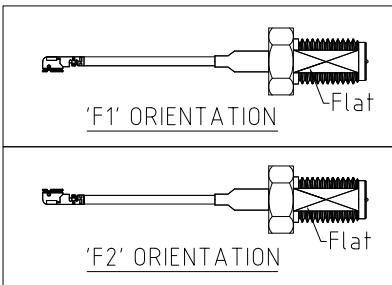
CABLE SIZE:  
1 =  $\phi$ 1.13MM CABLE, COLOR: GRAY.

WASHER AND NUT OPTIONS:  
BLANK = SEPERATELY PACKED (STANDARD)  
A = ASSEMBLED WITH CONNECTOR

ORIENTATION OPTIONS:  
BLANK = DOES NOT HAVE A FIXED ORIENTATION  
F1 = MHF CONNECTION DOWN (L=50-200MM)  
F2 = MHF CONNECTION UP (L=50-200MM)  
(SEE NOTES 1, 2, 3 AND DIAGRAMS FOR MORE INFORMATION)



RECOMMENDED SMA MOUNTING HOLE



REV. DATE & DRN  
10 14/03/23 - NYW RELEASE

Scale: NTS	THIRD ANGLE	Unstated X .XX .XXX ANGLES	Tolerances: N/A N/A N/A N/A	Material SEE NOTE
Drawn: NYW				
App'd: XXX	Title: CABLE ASSEMBLY	NOT TO SCALE		
Date: 14 MAR. '23	Revision: 1.0	Unit: mm		



www.gradconn.com

THIS DRAWING IS CONFIDENTIAL AND MUST NOT BE COPIED OR DISCLOSED WITHOUT WRITTEN CONSENT

Drawing Number: CAB557RF	
Sheet 1	of 1
Drawing C	E and O E