

CAB566RF: RP SMA STRAIGHT PLUG + RP SMA STRAIGHT BULKHEAD JACK W/O-RING RATED TO IP67/68 + MULTIPLE CABLE SIZES, 6GHz

SPECIFICATIONS :

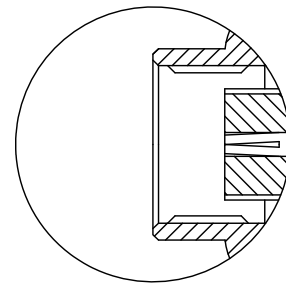
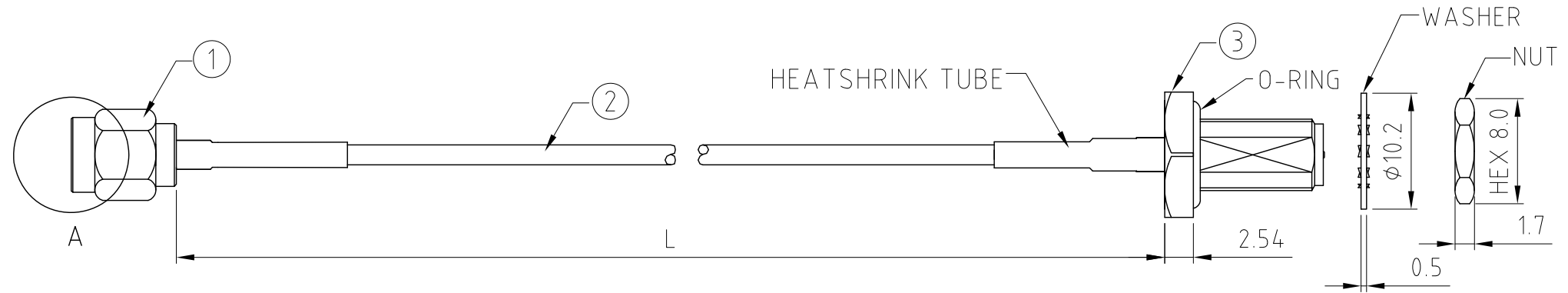
1. RP SMA STRAIGHT PLUG, P/N:
FOR RG178 CABLE: RFCT-SMA017-M78.
FOR ϕ 1.48MM CABLE: RFCT-SMA017-M48.
2. COAXIAL CABLE, SEE P/N FOR DETAIL.
3. RP SMA STRAIGHT BULKHEAD JACK W/O-RING RATED TO IP67/68, P/N: RFCT-SMA071-F78.

ENVIRONMENTAL:

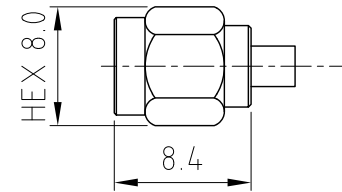
- A. BULKHEAD MOUNTED CONNECTOR (RFCT-SMA071-F78) RATED TO THE FOLLOWING SPECIFICATION:
- i. IP6X - DUST TIGHT - NO PARTICLE INGRESS.
 - ii. IPX7 WATERPROOF FOR 30 MINUTES UP TO 1 METER UNDERWATER.
 - iii. IPX8 WATERPROOF FOR 48 HOURS AT 1 METER UNDERWATER.

NOTES:

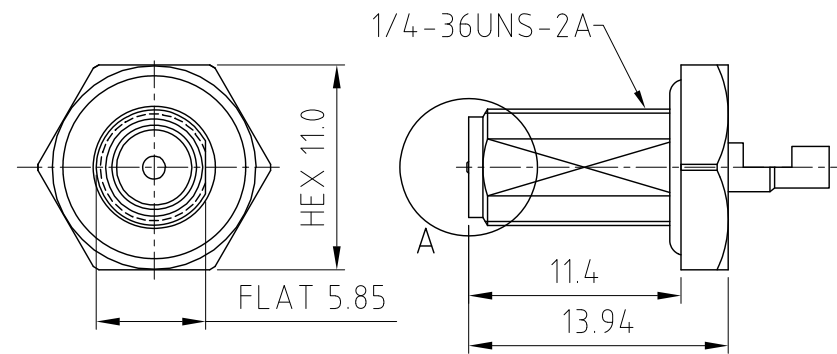
1. WORKING FREQUENCY RANGE: DC-6GHz.
2. OPERATING TEMPERATURE: -40°C~+125°C
3. IMPEDANCE: 50 OHM.



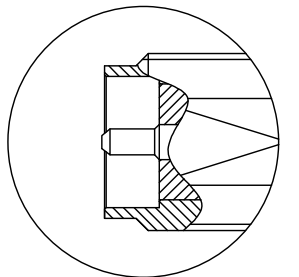
DETAIL A



SMA PLUG DETAIL DRAWING



SMA JACK DETAIL DRAWING



DETAIL B

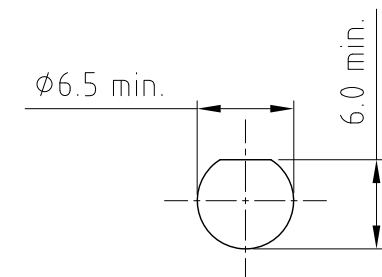
HOW TO ORDER

CAB566RF - X X X X - X - X

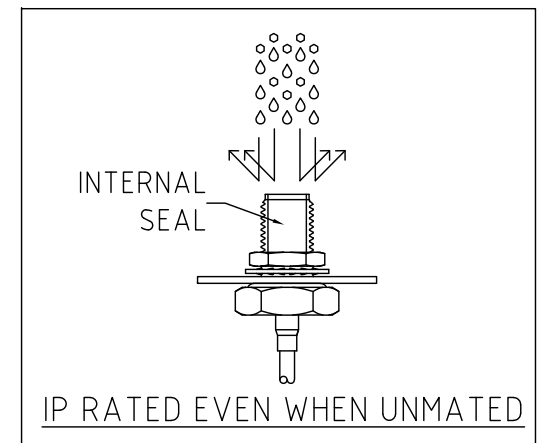
"L" LENGTH IN MM:
eg: 100MM = 0100
(MIN. 0050-MAX.2000
STANDARD = 0100, 0150, 0200)
Tolerance: 50mm: \pm 2mm.
51-200mm: \pm 5mm.
201-500mm: \pm 7mm.
501-999mm: \pm 10mm.
 \geq 1000mm: \pm (Lx0.02)mm.

CABLE SIZE OPTIONS:
1 = RG178 CABLE, COLOR: BROWN.
2 = ϕ 1.48MM CABLE, COLOR: BLACK.

WASHER AND NUT OPTIONS:
BLANK = SEPARATELY PACKED (STANDARD)
A = ALL ASSEMBLED WITH CONNECTOR



RECOMMENDED SMA MOUNTING HOLE



IP RATED EVEN WHEN UNMATED

REV. DATE & DRN
1.0 31/03/23 - NYW - RELEASE
1.1 12/06/24 - CC
ADD IP RATING VIEW.
ADD RP SMA PLUG DETAIL VIEW.

Scale: NTS	THIRD ANGLE	Unstated .X .XX .XXX ANGLES	Tolerances: \pm 0.2 \pm 0.2 \pm 0.2 N/A
Drawn: CC		Title: CABLE ASSEMBLY	
App'd: XXX	Revision: 1.1	Unit: mm	
Date: 12 JUN. '24			

NAUTILUS
IP Rated RF Products

GRADCONN
www.gradconn.com

Drawing Number: CAB566RF	
Sheet 1	of 1
Drawing ©	E and O E