

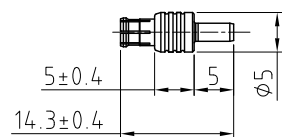
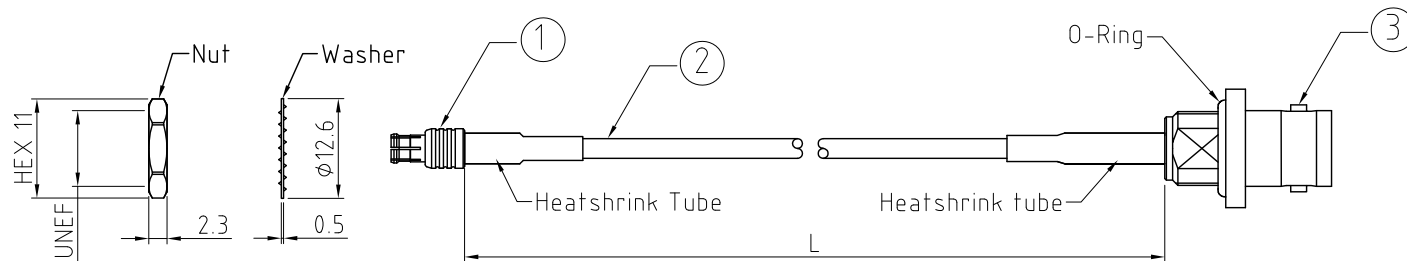
CAB590 RF: MCX STRAIGHT PLUG + BNC STRAIGHT BULKHEAD FRONT MOUNT JACK WITH O-RING+ RG316 CABLE, 3GHz

SPECIFICATIONS:

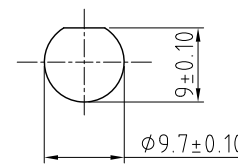
1. MCX STRAIGHT PLUG, P/N: RFCT-MCX016-M74.
2. COAXIAL CABLE: RG316 CABLE, COLOR: BROWN.
3. BNC STRAIGHT BULKHEAD FRONT MOUNT JACK WITH O-RING, P/N: RFCT-BNC013-F74.

NOTES:

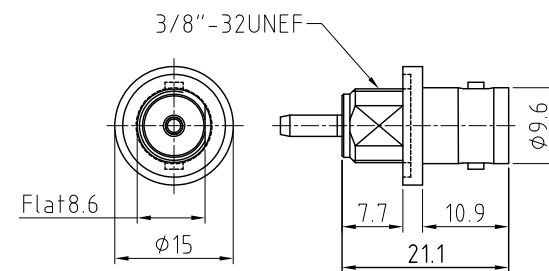
1. WORKING FREQUENCY RANGE: DC-3GHz.
2. OPERATING TEMPERATURE: -40°C~+125°C.
3. IMPEDANCE: 50 OHM.
4. IT IS INTENDED THAT MOUNTING OF THIS CONNECTOR IS ACHIEVED USING THE NUT AND WASHER PROVIDED. PLEASE CONTACT GRADCONN FOR ADVISE IF PLANNING TO USE A DIFFERENT METHOD OF MOUNTING.



MCX DETAIL DRAWING



RECOMMENDED BNC MOUNTING HOLE



BNC DETAIL DRAWING

HOW TO ORDER

CAB590 RF - X X X X - X - 1

"L" LENGTH IN MM:

- eg: 100MM = 0100
- (MIN. 0050-MAX.2000)
- STANDARD = 0100, 0150, 0200
- Tolerance: 50mm: ±2mm.
- 51-200mm: ±5mm.
- 201-500mm: ±7mm.
- 501-999mm: ±10mm.
- ≥1000mm: ± (Lx0.02)mm.

CABLE SIZE:

1 = RG316 CABLE, COLOR: BROWN.

WASHER AND NUT OPTIONS:

- BLANK = SEPARATELY PACKED (STANDARD)
- A = ASSEMBLED WITH CONNECTOR

REV. DATE & DRN
TO: 23/09/23- NTW RELEASE
11/26/07/24 - CC
ADD FREQUENCY 3GHz TO TITLE.
ADD BNC MOUNTING HOLE VIEW.

Scale: NTS	THIRD ANGLE	Unstated Tolerances: .X ±0.2 .XX ±0.2 .XXX ±0.2 ANGLES N/A	Material SEE NOTE
Drawn: CC			
App'd: XXX	Title CABLE ASSEMBLY	NOT TO SCALE	
Date: 26 JUL '24	Revision: 1.1	Unit: mm	



www.gradconn.com

THIS DRAWING IS CONFIDENTIAL AND MUST NOT BE COPIED OR DISCLOSED WITHOUT WRITTEN CONSENT

Type: CAB590 RF
CAB590 RF
Drawing Number:
Sheet 1 of 1
Drawing © E and O E